



claus rodenberg waldkontor gmbh

Schmiedekoppel 7 – 9

D - 23847 Kastorf

Fon +49 - (0)4501-82 01-88

Fax +49 - (0)4501-82 01-87

M/V Virma 2



NAME	VIRMA 2
VESSEL TYPE	General Cargo Ship Volgo- Balt- Type
IMO	8230481
CALL SIGN	J8B3557
GT/NT	2.516 tons/1.147 tons
DWAT	3.510 tons
DWCC	app. 3.416 tons
FLAG	ST. VINCENT & GRENADINES
HOMEPORT	Kingstown
BREADTH EXTREME	13,00 m
LENGTH OVERALL	114,00 m
DRAUGHT FULL LADEN	3,93
DRAFT	3,93 m
CREW MEMBERS	8

CLASS	KM* L4 IIIIS
HULL TYPE	SINGLE HULL
ICE CLASS	no
BUILD	1981
BUILDER	Slovenske Lodenice, Slovakia
MAX. SPEED	9,5 knots
ENGINE POWER	1.030 kW
BOW THRUSTER	no
CARGO HOLD	1* (19,3 m x 11,24 m x 5,08 m) 2* (19,8 m x 11,24 m x 5,44 m) 1* (19,5 m x 11,24 m x 5,47 m)
HATCHES	1* (18,8 m x 9,52 m) 2* (19,7 m x 9,52 m) 1* (19,5 m x 9,52 m)
BALE	165.100 cbft
GRAIN	166.700 cbft
INTAKE	abt. 3.250 scbm logs
THEREOF ON DECK	app. 1.000 scbm
WOODCHIPS	4.724 cbm (+ trimming factor)

CONTACT DETAILS	
EMAIL	virma2.kingstown@yandex.com
MOBILE	+37256230578
MMSI	236002000
Telex	437638410@stratosmobile.net



All particulars given in good faith and believed to be correct, but without guarantee.



claus rodenberg waldkontor gmbh

Schmiedekoppel 7 – 9

D - 23847 Kastorf

Fon +49 - (0)4501-82 01-88

Fax +49 - (0)4501-82 01-87

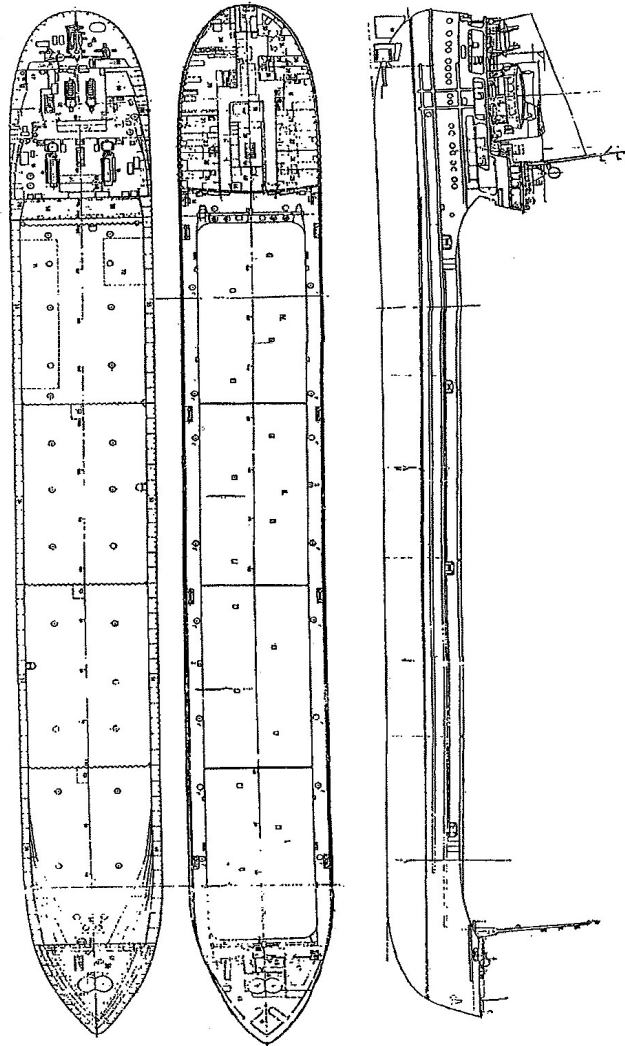


Рисунок 1.1. Общее расположение
Figure 1.1. General arrangement



claus rodenberg waldkontor gmbh

Schmiedekoppel 7 – 9

D - 23847 Kastorf

Fon +49 - (0)4501-82 01-88

Fax +49 - (0)4501-82 01-87

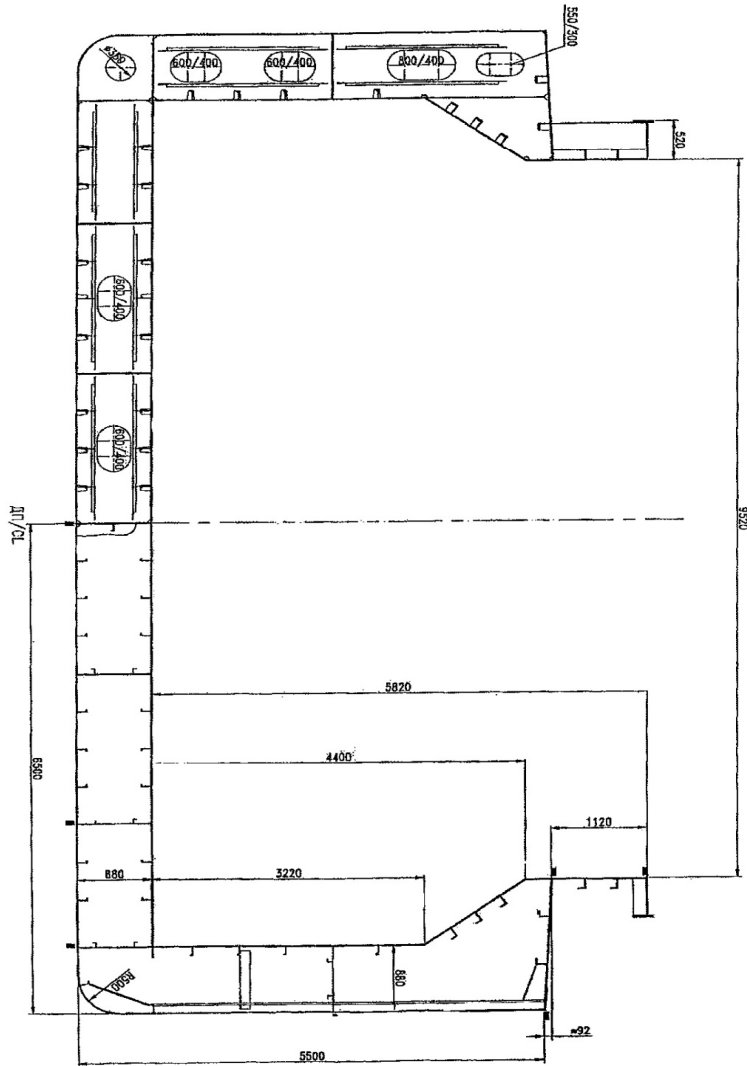


Рисунок 1.2 Схема поперечного сечения трюма.
Figure 1.2 Transverse section of hold.